

# Local Market Update – January 2012

A RESEARCH TOOL PROVIDED BY THE REALTORS® ASSOCIATION OF THE PALM BEACHES



## Greenacres

**+ 20.5%**

Change in  
New Listings

**+ 28.9%**

Change in  
Closed Sales

**+ 17.6%**

Change in  
Median Sales Price

### January

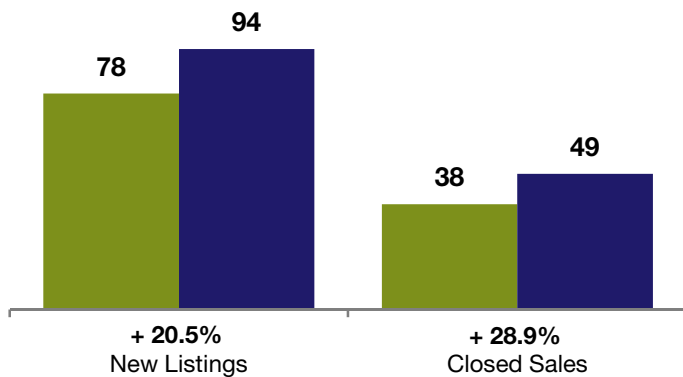
### Year to Date

	2011	2012	+ / -	2011	2012	+ / -
New Listings	78	94	+ 20.5%	78	94	+ 20.5%
Closed Sales	38	49	+ 28.9%	38	49	+ 28.9%
Median Sales Price*	\$46,351	<b>\$54,500</b>	+ 17.6%	\$46,351	<b>\$54,500</b>	+ 17.6%
Percent of Original List Price Received*	90.8%	<b>94.8%</b>	+ 4.3%	90.8%	<b>94.8%</b>	+ 4.3%
Days on Market Until Sale	144	<b>106</b>	- 26.5%	144	<b>106</b>	- 26.5%
Inventory of Homes for Sale	529	<b>236</b>	- 55.4%	--	--	--
Months Supply of Inventory	11.4	<b>3.3</b>	- 70.7%	--	--	--

\* Does not account for seller concessions. | Activity for one month can sometimes look extreme due to small sample size.

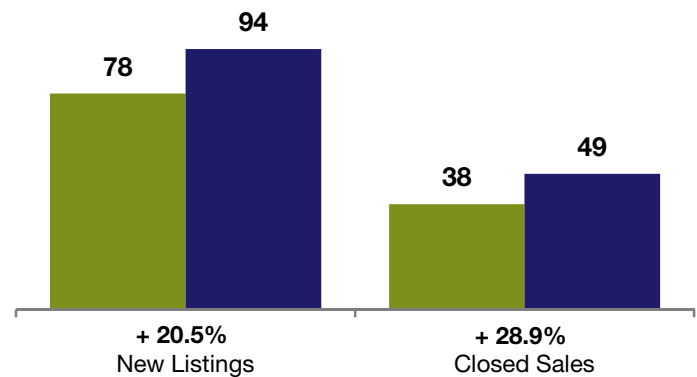
### January

■ 2011 ■ 2012



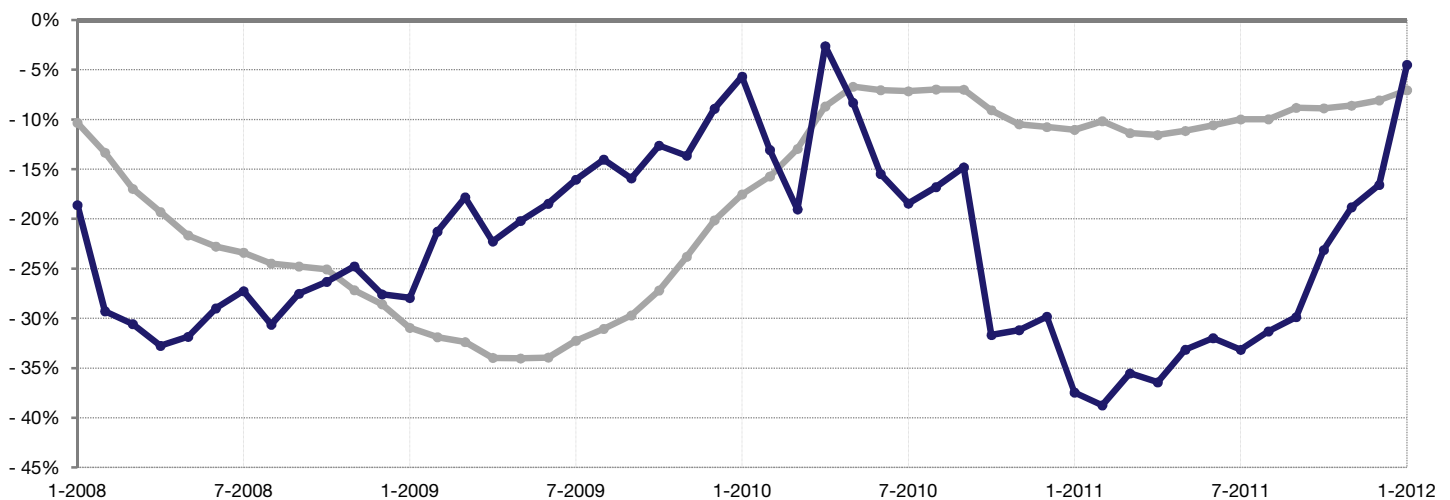
### Year to Date

■ 2011 ■ 2012



### Change in Median Sales Price from Prior Year (6-Month Average)\*\*

All MLS — All MLS  
Greenacres — Greenacres



\*\* Each dot represents the change in median sales price from the prior year using a 6-month weighted average. This means that each of the 6 months used in a dot are proportioned according to their share of sales during that period. | All data from the Regional MLS. | Powered by 10K Research and Marketing.