

Local Market Update – January 2012

A RESEARCH TOOL PROVIDED BY THE REALTORS® ASSOCIATION OF THE PALM BEACHES



Boynton Beach

+ 7.2%

Change in
New Listings

+ 4.3%

Change in
Closed Sales

- 1.2%

Change in
Median Sales Price

January

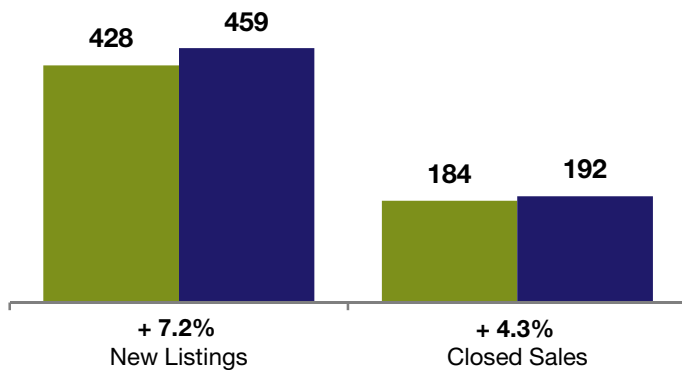
Year to Date

	2011	2012	+ / -	2011	2012	+ / -
New Listings	428	459	+ 7.2%	428	459	+ 7.2%
Closed Sales	184	192	+ 4.3%	184	192	+ 4.3%
Median Sales Price*	\$136,900	\$135,200	- 1.2%	\$136,900	\$135,200	- 1.2%
Percent of Original List Price Received*	87.0%	88.1%	+ 1.3%	87.0%	88.1%	+ 1.3%
Days on Market Until Sale	154	167	+ 8.3%	154	167	+ 8.3%
Inventory of Homes for Sale	2,722	1,654	- 39.2%	--	--	--
Months Supply of Inventory	12.7	6.0	- 53.2%	--	--	--

* Does not account for seller concessions. | Activity for one month can sometimes look extreme due to small sample size.

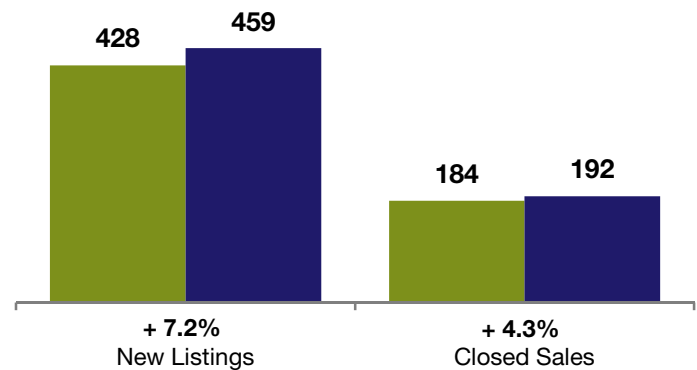
January

■ 2011 ■ 2012



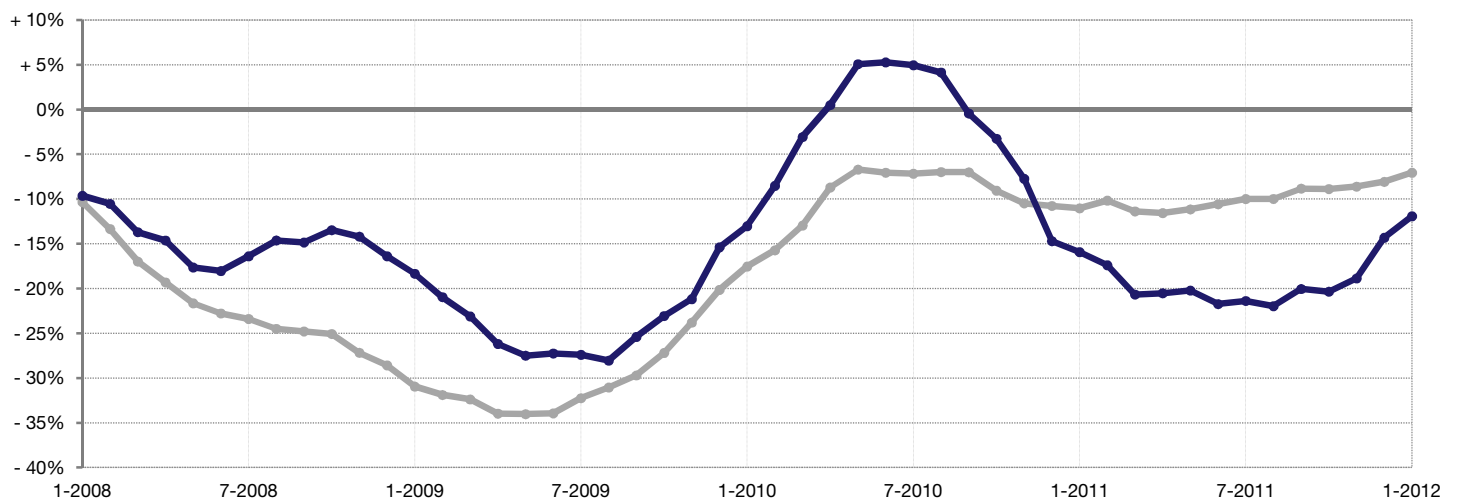
Year to Date

■ 2011 ■ 2012



Change in Median Sales Price from Prior Year (6-Month Average)**

All MLS — Boynton Beach —



** Each dot represents the change in median sales price from the prior year using a 6-month weighted average. This means that each of the 6 months used in a dot are proportioned according to their share of sales during that period. | All data from the Regional MLS. | Powered by 10K Research and Marketing.